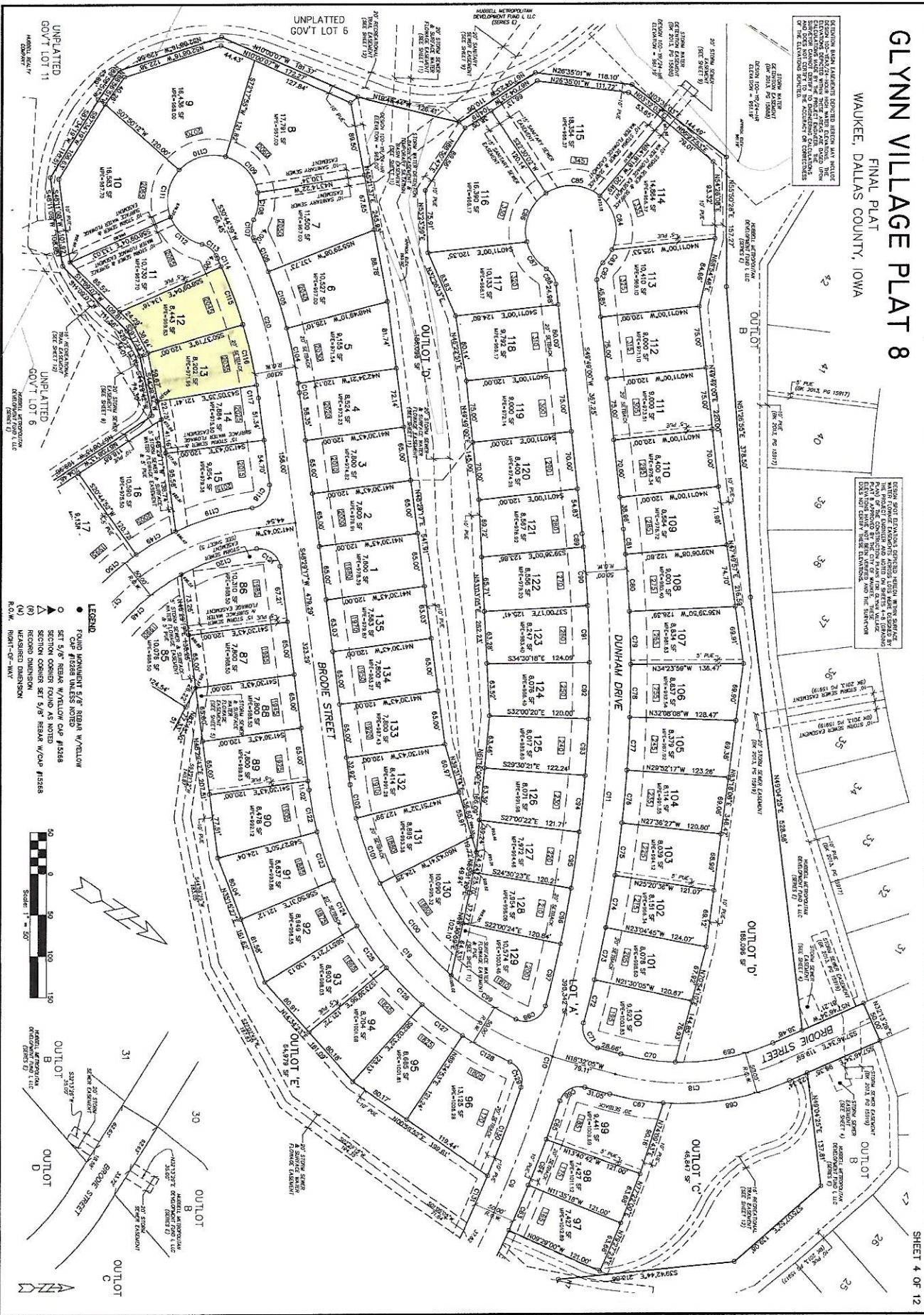


GLYNN VILLAGE PLAT 8

FINAL PLAT
WAUKEE, DALLAS COUNTY, IOWA

EXAMINATION HAS BEEN MADE AND THE RECORDS OF THE COUNTY ENGINEER HAVE BEEN CHECKED AND THE SAME ARE FOUND TO BE CORRECT AND COMPLETE AND THE ENGINEER HEREBY CERTIFIES THAT THE SAME ARE TRUE AND CORRECT AND THAT THE SAME ARE IN ACCORDANCE WITH THE LAWS OF THE STATE OF IOWA.



ERG
Engineering Resource Group, Inc.
Engineers and Surveyors
515 S. GARDEN AVENUE
DES MOINES, IOWA 50312
(515) 288-4823

GLYNN VILLAGE PLAT 8

NO.	REVISION	DATE	BY	FOR	LOCATION:	SCALE:	DESIGNED BY:	CHECKED BY:	DRAWN BY:
						1" = 50'	CB	DFR	DFR
						DWG: 13-028P.DWG			
						FIELD BOOK:			
							SHEET 4 OF 12		FILE NO: 13-028.00

13-028

SHEET 4 OF 12